



**STEEL KING™**  
BUILT TO DELIVER

# SK3000™ | SK4000™ Structural Racking Solutions



**SK3000  
CHANNEL**



**SK4000  
TUBULAR**





# Built to deliver

*Designed to perform*



**Not all rack is the same**

## STEEL KING IS BUILT TO LAST

# SK3000<sup>®</sup>

## *Structural channel rack*

Structural channel rack is the system of choice for many applications because of its heavy load capacity and superior abuse resistance. But not all structural racks are created the same.

We engineer and manufacture to high quality standards and use only US steel, which results in greater overall strength and rigidity.



### **What does this mean for you?**

Steel King's SK3000 pallet rack is the result of continual innovation and advancement to provide greater overall strength and rigidity.

**This means you get the best value in structural pallet racks available** – a longer service life, lower maintenance costs and improved safety – all at a competitive price.





## Columns

- Hot-rolled structural channel steel for greater durability
- Factory-welded frame increases impact resistance
- Available in 3", 4" and 5" options

## Frame Bracing

- Braces are 1.5" x 1.5" structural angles welded to the 3" columns or 2" x 2" structural angle for 4" and 5" columns



Channel Beams

## Beams

- Manufactured with high-strength steel (55,000 psi min step, 50,000 psi min channel)
- Beams are one piece, continuously welded and seamless
- Our full-vertical fillet weld is stronger than spot welding

## Hybrid System

- Hybrid systems are constructed using structural uprights and roll-formed beams with bolted connectors
- Retain the strength advantage of structural frame with the cost efficiency of roll-formed beams.



Step Beams

## Connections

- 2" adjustability for better space utilization
- Two bolts per beam provide 57% more strength than a single-bolt design
- Heavy 7-gauge wrap-around connector plates help square the rack for tighter connection
- Grade 5 hardware provides greater shear strength



# Rugged and affordable

## Advantages

- Modular system allows design flexibility
- Expands easily
- Thicker and tighter fitting connector plates
- All structural



Footpads are available in standard (shown) or heavy-duty

## Standard Footpad

- Heavy duty 7-gauge footpad is welded to the column to disperse floor load and increase stability
- Multiple anchor holes for easy attachment
- Heavy-duty footpads also available

# APPLICATIONS

## SK3000 Structural Channel Rack

is a modular system, providing the flexibility to fit a wide variety of applications and expand easily as your storage requirements grow.

Coupled with our powder coat paint, SK3000 can withstand the wear and tear of the toughest environments, including distribution centers, freezers and coolers.

### *Have a unique storage challenge?*

*Let Steel King help. With our wide range of racking solutions, the sky is the limit ...*



## Dynamic Rack Systems

### Pushback Rack

*High density, easy access*



#### **Pallet management**

SK3600 is a dynamic rack that allows you to store pallets 2- to 5-deep, while retaining easy access to a variety of SKUs.

Each level and lane is independently accessible and allows up to 90% more product storage than selective rack. Pallets are stored on nested carts riding on inclined rails. Pallets push back when loaded and roll gently forward to unload.

#### **Advantages:**

- Fewer aisles and forklifts needed
- Provides support for weak pallets
- Accommodates non-standard pallet sizes
- Heavy duty wheels, bearings and carts
- Carts ship pre-assembled, ensuring components are square and operate smoothly

#### **Applications:**

- LIFO inventory



### Flow Rack

*FIFO inventory control*



#### **Dense storage, FIFO inventory control**

SK3400 consists of wheeled flow rails set into a stationary rack structure. This allows optimization of warehouse space and provides better inventory control for perishable and time-sensitive products.



#### **Advantages:**

- Gravity fed, reducing handling costs
- Fewer aisles and forklifts needed
- Full selection of wheel and roller configurations available

#### **Applications:**

- FIFO inventory
- Raw materials receiving and storing
- Work-in-process
- Buffer storage
- Finished goods
- Order picking
- Cross docking



## **Drive-in**

### *High density storage*



#### **Forklift friendly**

Drive-in racking is ideal for cost-effective high density storage that allows forklift access. Because Drive-In is subject to more abuse than any other rack configuration, Steel King's Drive-In rack is engineered and manufactured to better stand up to this punishment.



#### **Advantages:**

- Load rails constructed of durable structural angle steel
- Flared rail entry ends allow easy bay access
- Space-saver, low-profile arms
- Welded aisle-side load arms
- 2" vertical adjustability
- Welded rail stops

#### **Applications:**

- Coolers and blast freezers
- Beverage industry
- Drive-Thru

## **Double deep**

### *High density plus selectivity*



#### **Maximize storage density**

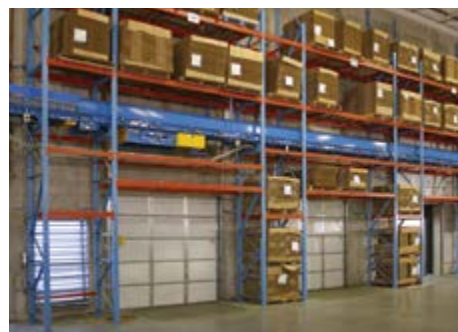
Designed to increase storage capacity while maintaining a high degree of selectivity, pallets are stored two deep on a single-sided unit or four deep on double-sided racks.

#### **Applications:**

- Ideal for cold storage applications

## **Over Dock**

### *Use loading area efficiently*



Eliminate clutter in dock area, improve safety and operational efficiency.

- Fits around existing loading dock doors
- Take advantage of wasted space
- Wall-tied or ceiling-supported options available in low seismic areas

## **AS/RS**

### *Automated storage & retrieval*



#### **Reduce labor, increase capacity**

Steel King offers Automated Storage and Retrieval System solutions in a Unit Load or Mini Load system that is PE engineered and designed to project requirements.

**Unit Load** systems are large and usually palletized storage systems that can be designed from single-deep to multi-deep.

**Mini Load** systems are smaller and designed to hold trays or totes.

#### **Advantages:**

- Height capability allows for high density storage in least amount of space
- Crane manufacturer specs fully integrated into system
- Project management by Steel King

#### **Applications:**

- Rack-supported building configuration possible
- Sorter platforms

# OPTIONS & ACCESSORIES

Steel King offers a complete line of accessories that can increase the utility and durability of your investment.



## Offset Front Column

The offset front column provides greater forklift clearance at the aisle face to prevent forklift/pallet frame damage where impact risk is highest.

## Row Spacers

create perfectly-aligned back-to-back pallet racking, as well as being used to join two rows of racking for greater stability.



## Wall Ties

eliminate the worry of rack sway or tipping by connecting your rack to your facility. Steel construction resists bending. For low seismic zone use only.

## Beam Ties

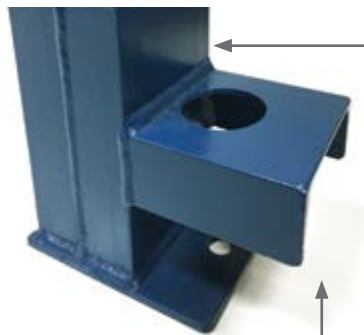
Used to help support weak or misplaced pallets and/or to tie beams for increased capacities.

## Pallet Stops

Used to retain loads from being pushed off the back of the rack.

## Double Reinforced Post

Double the strength where you need it most. Available in a variety of heights.



## Heavy Horizontal

Replaces standard first horizontal brace with factory-welded structural channel.

## Decking Supports

Used to support plywood or other deck types. Sized to make decking flush with the top of the beams.

## Pallet Supports

Used to help support weak or misplaced pallets. Flush with the top of the beams.



## Column Protectors

Keep pallet racks safe from loading equipment damage with welded-on or free-standing protectors. Enclosed, welded top for cleanliness and safety.

## Rack End Protection

With a bright industrial yellow paint finish and anchored to the floor, both Steel Guard and Guard Dawg are highly visible and effective for the prevention of fork truck-incurred rack damage.



## Rub Rails

Protect aisle ends from incidental contact.



## Powder Coat Paint Finish

Powder coat paint is environmentally friendly. Powder coating contains no solvents and releases negligible amounts, if any, VOCs into the atmosphere. Overspray is retrieved and reused, virtually eliminating the waste commonly found in liquid finishing processes. Our paint finish will make your purchase look better and last longer.



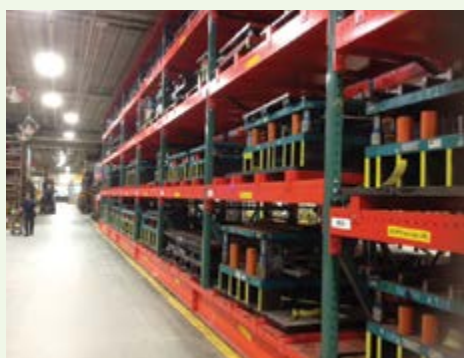


# SK4000<sup>®</sup>

## Structural tubular rack



Columns are available in three standard sizes – 3" x 3," 3" x 4," 4" x 4."



### Advantages:

- Fully welded tubular steel for both horizontal and diagonal bracing
- Beam adjustability at 3" increments
- Sanitary version with welded-on caps and fewer holes to catch debris
- Greater impact resistance

### Applications:

- Seismic zones
- Rack-supported buildings
- AS/RS (Automatic Storage and Retrieval Systems)
- Heavy paper roll storage
- Drive-In
- Die racks
- Food industry

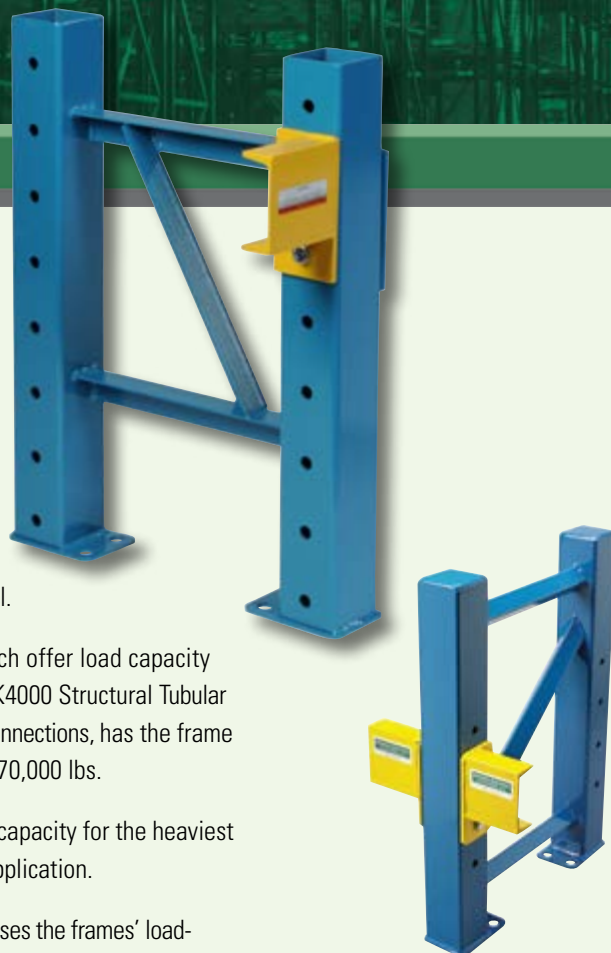
SK4000 Structural Tubular pallet rack combines the load capacity of structural channel racks with the torsional strength of tubular steel.

Unlike conventional racks which offer load capacity in the 30,000 lbs. range, the SK4000 Structural Tubular Pallet Rack, with bolted beam connections, has the frame strength to support loads over 70,000 lbs.

This is more than enough rack capacity for the heaviest die storage rack or auto part application.

Thick structural tube steel increases the frames' load-carrying capacity and resistance to seismic forces, while enabling greater resistance to fork truck impact damage.

**The SK4000 has the frame strength to support loads over 70,000 lbs.**



For use in the food industry, sanitary versions of SK4000 pallet rack have diamond-profile bracing and connection holes only where beams are located, eliminating extra holes that can catch dirt and debris.

SK4000 is available with a bacteria-resistant finish.



For added strength, fully welded tubular steel is used for both horizontal and diagonal bracing.

Steel King is your source for ...



**Racking systems**



**Cantilever rack**



**Specialty racks**



**Elevated work platforms**



**Steel guard rail**



**Industrial containers**



**Custom shipping racks**



**Portable racks**



**Steel King**  
has been delivering  
customized storage  
solutions since 1970,

designing and manufacturing pallet racking  
systems and related material handling  
products that improve operational efficiency  
in manufacturing, warehousing and  
distribution facilities.

When it comes to offering the highest  
quality, safest and most diverse product  
offerings,

**Steel King is built to deliver.**



**STEEL KING™**

**BUILT TO DELIVER**

2700 Chamber Street, Stevens Point, WI 54481 | 715-341-3120 | 800-826-0203 | [www.steelking.com](http://www.steelking.com)

**PLANT LOCATIONS**

2700 Chamber Street, Stevens Point, WI 54481

325 East Beckert Road, New London, WI 54961

30 Industrial Boulevard SE, Rome, GA 30161