



Standard Duty Cantilever Capacity Chart: Column Type / Capacity Per Side (lbs)

Base and column are always the same section except when there is a 10" column it is a 12" base (in other words, bases are never smaller than 12 inches tall). Bases are always made of 7 GA which means they are of the "N" variety

8/20/2016

Column Type		WSUER	WSUEN	WSUFN	WSUGN	WSUHN	WSUIN
Tower Height	Arm Length	(10410SS)	(10407SS)	(12407SS)	14407SS)	(16407SS)	(18407SS)
96"	12"	20,230	28720	30660	32860	34390	35650
	18"	16,880	23,900	26,050	28,360	30,010	31,420
	24"	14,470	20,460	22,640	24,930	26,620	28,080
	30"	12,660	17,880	20,010	22,230	23,910	25,370
	36"	11,240	15,860	17,920	20,050	21,690	23,140
	42"	10,100	14,250	16,210	18,260	19,840	21,260
	48"	9,160	12,930	14,800	16,750	18,280	19,650
	54"	8,370	11,820	13,610	15,470	16,940	18,270
	60"	7,710	10,890	12,580	14,360	15,770	17,060
	66"	7,130	10,080	11,700	13,400	14,750	16,000
	72"	6,630	9,380	#	#	#	#
Column Type		WSUER	WSUEN	WSUFN	WSUGN	WSUHN	WSUIN
Tower Height	Arm Length	(10410SS)	(10407SS)	(12407SS)	14407SS)	(16407SS)	(18407SS)
120"	12"	19,790	28,110	30,140	32,400	33,990	35,310
	18"	16,570	23,480	25,670	28,010	29,710	31,150
	24"	14,240	20,150	22,350	24,660	26,380	27,860
	30"	12,480	17,630	19,780	22,010	23,710	25,190
	36"	11,100	15,670	17,730	19,880	21,520	22,990
	42"	9,980	14,090	16,060	18,110	19,700	21,190
	48"	9,060	12,800	14,670	16,620	18,160	19,540
	54"	8,290	11,710	13,500	15,360	16,830	18,170
	60"	7,640	10,790	12,490	14,270	15,680	16,980
	66"	7,070	10,000	11,620	13,320	14,670	15,930
	72"	6,580	9,310	#	#	#	#

Indicates that this height must be sold as double sided only due to height to depth ratio, in which case capacity doubles



Standard Duty Cantilever Capacity Chart: Column Type / Capacity Per Side (lbs)

Base and column are always the same section except when there is a 10" column it is a 12" base (in other words, bases are never smaller than 12 inches tall). Bases are always made of 7 GA which means they are of the "N" variety

8/20/2016

Column Type		WSUER	WSUEN	WSUFN	WSUGN	WSUHN	WSUIN
Tower Height	Arm Length	(10410SS)	(10407SS)	(12407SS)	14407SS)	(16407SS)	(18407SS)
144"	12"	16,920	25,170	26,720	28,630	29,860	30,810
	18"	14,080	20,970	22,660	24,610	25,940	27,010
	24"	12,040	17,950	19,650	21,570	22,910	24,030
	30"	10,510	15,680	17,340	19,190	20,510	21,630
	36"	9,310	13,910	15,500	17,270	18,560	19,660
	42"	8,340	12,480	14,000	15,690	16,930	18,010
	48"	7,550	11,320	12,760	14,370	15,560	16,610
	54"	6,890	10,340	11,720	13,240	14,390	15,400
	60"	6,320	9,510	10,820	12,270	13,370	14,350
	66"	5,830	8,790	10,040	11,430	12,490	13,430
	72"	5,410	8,170	9,360	10,690	11,700	12,610

Column Type		WSUER	WSUEN	WSUFN	WSUGN	WSUHN	WSUIN
Tower Height	Arm Length	(10410SS)	(10407SS)	(12407SS)	14407SS)	(16407SS)	(18407SS)
168"	12"	18,240	26,190	28,290	30,610	32,250	33,580
	18"	15,350	22,010	24,180	26,510	28,210	29,630
	24"	13,240	18,960	21,100	23,370	25,060	26,510
	30"	11,620	16,650	18,710	20,890	22,540	23,970
	36"	10,350	14,550	16,790	18,870	20,460	21,870
	42"	9,320	12,830	15,220	17,200	18,730	20,100
	48"	8,460	11,460	13,910	15,790	17,260	18,580
	54"	7,740	10,340	12,800	14,590	16,000	17,270
	60"	7,130	9,410	11,850	13,550	14,900	16,130
	66"	6,560	8,620	11,020	12,640	13,940	15,120
	72"	6,040	7,950	10,290	11,840	13,090	14,230

Indicates that this height must be sold as double sided only due to height to depth ratio, in which case capacity doubles



Standard Duty Cantilever Capacity Chart: Column Type / Capacity Per Side (lbs)

Base and column are always the same section except when there is a 10" column it is a 12" base (in other words, bases are never smaller than 12 inches tall). Bases are always made of 7 GA which means they are of the "N" variety

8/20/2016

Column Type		WSUER	WSUEN	WSUFN	WSUGN	WSUHN	WSUIN
Tower Height	Arm Length	(10410SS)	(10407SS)	(12407SS)	14407SS)	(16407SS)	(18407SS)
192"	12"	#	23,190	24,850	26,810	28,080	29,030
	18"	#	19,460	21,160	23,110	24,420	25,460
	24"	#	16,750	18,410	20,290	21,600	22,660
	30"	#	14,680	16,290	18,080	19,350	20,410
	36"	#	12,730	14,590	16,290	17,520	18,560
	42"	#	11,210	13,200	14,820	15,990	17,000
	48"	#	10,010	12,050	13,580	14,710	15,680
	54"	#	9,030	11,070	12,520	13,600	14,540
	60"	#	8,210	10,230	11,610	12,640	13,550
	66"	#	7,520	9,500	10,820	11,810	12,680
	72"	#	6,930	8,870	10,120	11,070	11,910
Column Type		WSUER	WSUEN	WSUFN	WSUGN	WSUHN	WSUIN
Tower Height	Arm Length	(10410SS)	(10407SS)	(12407SS)	14407SS)	(16407SS)	(18407SS)
216"	12"	#	22,960	25,910	28,370	30,140	31,550
	18"	#	18,360	22,300	24,690	26,450	27,890
	24"	#	15,080	19,560	21,840	23,550	24,980
	30"	#	12,780	17,410	19,570	21,210	22,620
	36"	#	11,070	15,680	17,720	19,290	20,650
	42"	#	9,750	14,250	16,180	17,670	18,990
	48"	#	8,700	12,920	14,880	16,300	17,570
	54"	#	7,840	11,700	13,760	15,120	16,340
	60"	#	7,120	10,680	12,790	14,090	15,270
	66"	#	6,520	9,820	11,950	13,190	14,320
	72"	#	6,000	9,070	11,200	12,390	13,470

Indicates that this height must be sold as double sided only due to height to depth ratio, in which case capacity doubles



Standard Duty Cantilever Capacity Chart: Column Type / Capacity Per Side (lbs)

Base and column are always the same section except when there is a 10" column it is a 12" base (in other words, bases are never smaller than 12 inches tall). Bases are always made of 7 GA which means they are of the "N" variety

8/20/2016

Column Type		WSUER	WSUEN	WSUFN	WSUGN	WSUHN	WSUIN
Tower Height	Arm Length	(10410SS)	(10407SS)	(12407SS)	14407SS)	(16407SS)	(18407SS)
240"	12"	#	20,820	23,070	25,080	26,370	27,320
	18"	#	17,500	19,720	21,660	22,960	23,960
	24"	#	14,360	17,210	19,050	20,310	21,320
	30"	#	12,160	15,250	16,980	18,200	19,200
	36"	#	10,520	13,670	15,310	16,480	17,450
	42"	#	9,250	12,380	13,930	15,040	15,980
	48"	#	8,240	11,310	12,760	13,830	14,730
	54"	#	7,420	10,390	11,770	12,780	13,650
	60"	#	6,730	9,600	10,910	11,880	12,710
	66"	#	6,140	8,920	10,160	11,080	11,880
	72"	#	5,640	8,310	9,500	10,380	11,150

Indicates that this height must be sold as double sided only due to height to depth ratio, in which case capacity doubles

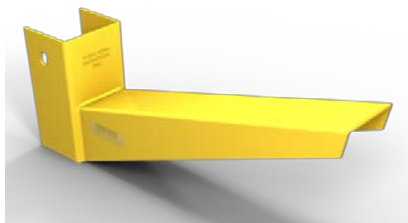


8/20/2016

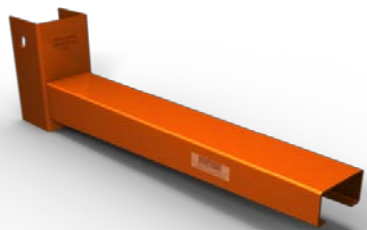
Standard Duty Cantilever Capacity Chart: Cantilever Arms

Model Number	IANSR	SANSR	SANTA	SAN3L	SAN3H	SANM	SAN4L	SAN4H	SAN5H	SANH
Material	Formed 10 GA Formed 7 GA	Formed 10 GA Formed 7 GA	3" x 4" Tube	3" Channel	3" Channel	Formed & Taperd Upper	4" Channel	4" Channel	5" Channel	Formed & Tapered Upper
Length										
12"	1030 (10 GA)	3540 (10 GA)	7650	7800	8800	11020	13800	15000	18000	14600
18"	690 (10 GA)	2570 (10 GA)	5100	5200	5800	8590	9200	10200	12000	11420
24"	520 (10 GA)	2020 (10 GA)	3820	3900	4400	7040	6900	7700	9000	9370
30"	#	1660 (10 GA)	3060	3100	3520	5960	5500	6170	7200	7940
36"	#	1410 (10 GA)	2550	2600	2930	5170	4600	5100	6000	6890
42"	#	1640 (7 GA)	2180	2240	2500	4560	3900	4400	5140	6080
48"	#	1440 (7 GA)	2000	1890	2200	4070	3200	3760	4500	5440
54"	#	#	1770	1650	1800	3680	2800	2970	4000	4910
60"	#	#	1660	1400	1500	3360	2300	2400	3600	4480
66"	#	#	#	#	#	3080	2200	2300	3364	4120
72"	#	#	#	#	#	2850	2100	2200	3000	3810

Arm Styles



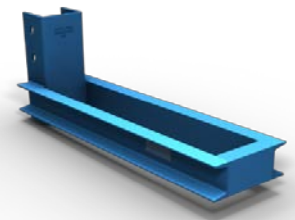
IANSRXXX



SANSRXXX



SANTAXXX



SAN3HXXX